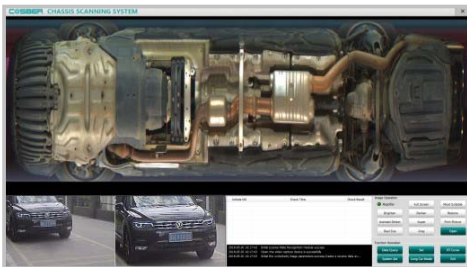


Chassis Scanning System

Features

- ▶ Automatic digital line scan camera, with high-resolution and clarity of the image.
- ▶ The complete image of chassis scanning, without any omissions and the image is clear, complete, no distortion, can be clearly observed that the object is not less 2mm in diameter.
- ▶ Preparation of inspection processes to meet a variety of on-site needs.
- ▶ Multiple scene image monitoring, recording function.
- ▶ Multi-language user interface design.
- ▶ Strong scalability to easily achieve a variety of system linkage control.
- ▶ ALPR (Automatic Licence Plate Recognition) (optional).
- ▶ Multiple devices networked control functions (optional) .



Software interface



C-CSS-1

Technical data

Item	C-CSS-1
Item No.	12.08.01.0042
Vertical resolution	2048 pixle
Check the width viewing angle	<4 meters
Vehicle pass speed	1~10 Km/H
Effective Field of view (FOV)	<170°
Auxiliary light	2×25 W LED
Water-proof	IP68
Equipment weight	30 kg
Equipment dimension L×W×H	400 × 450 × 88 mm
Working temperature	-10~55 °C